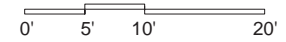
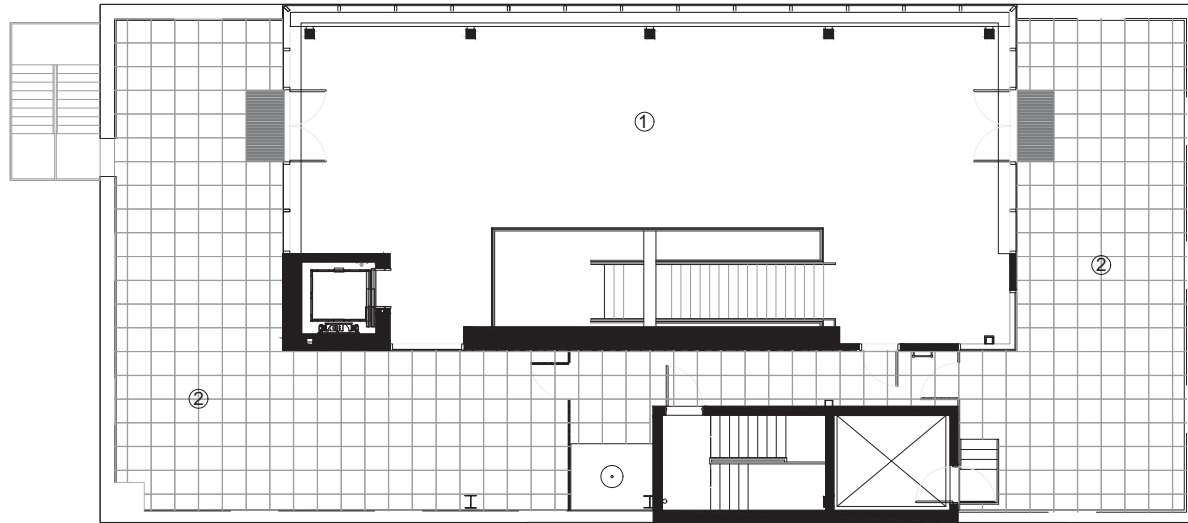


⊗ NINTH FLOOR PLAN

- | | |
|-----------------------|------------------------|
| 1 VESTIBULE/RECEPTION | 7 STORAGE |
| 2 ARCHIVES | 8 PRIVATE GALLERIES |
| 3 POWDER ROOM | 9 MAIN EXHIBITION ROOM |
| 4 BATHROOM | |
| 5 KITCHEN | |
| 6 SERVER ROOM | |





⊗ MEZZANINE FLOOR PLAN

- 1 MEZZANINE GALLERY
- 2 SCULPTURE TERRACE

